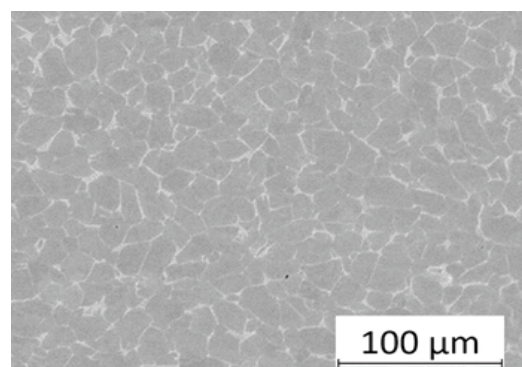
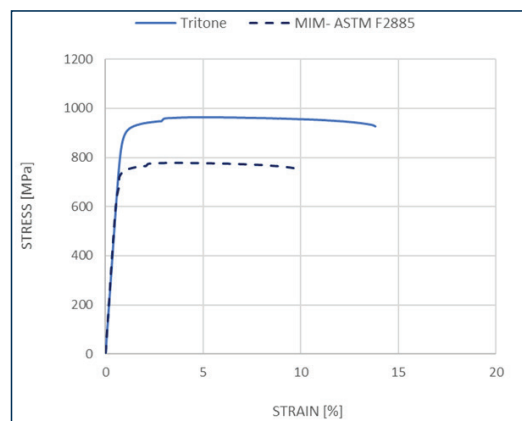


## Material datasheet

# 6Al-4V Titanium Alloys

### Composition – According to ASTM B348/ASTM F2885

Composition	Amount
Aluminium	5.5-6.75%
Vanadium	3.5-4.5%
Carbon	0.08% max
Oxygen	<0.25% max
Iron	0.30% max
Titanium	Bal.



### Typical Mechanical Properties

	Standard	Tritone	MIM - Surgical ASTM F2885	MIM ISO 22068	Wrought ASTM B348
Ultimate Tensile Strength, MPa	ASTM E8	960	780	800	895
0.2% Yield Strength, MPa	ASTM E8	890	680	600	828
Elongation at Break, %	ASTM E8	14	10	3	10
Relative density, %	ASTM B962	97	96	95	100



alphacam GmbH  
Erlenwiesen 16  
D-73614 Schorndorf  
Tel.: +49 7181 9222-0  
info@alphacam.de

alphacam austria GmbH Handelskai  
92, Gate1 / 2. OG / Top A  
A-1200 Wien  
Tel.: +43 1 3619 600-0  
info@alphacam.at

alphacam swiss GmbH  
Zürcherstrasse 14  
CH-8400 Winterthur  
Tel.: +41 52 26207-50  
info@alphacam.ch



alphacam.de  
.at  
.ch